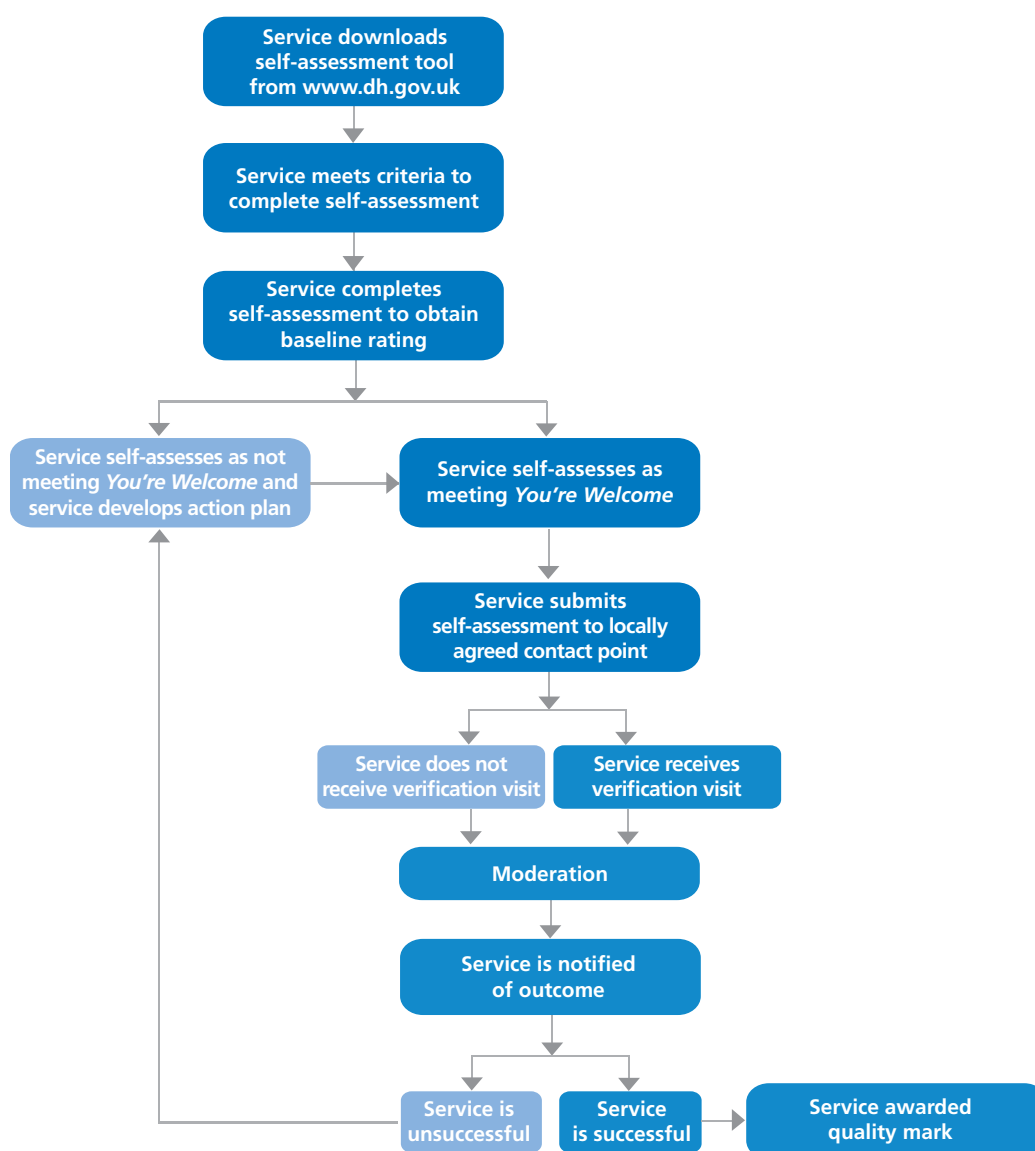


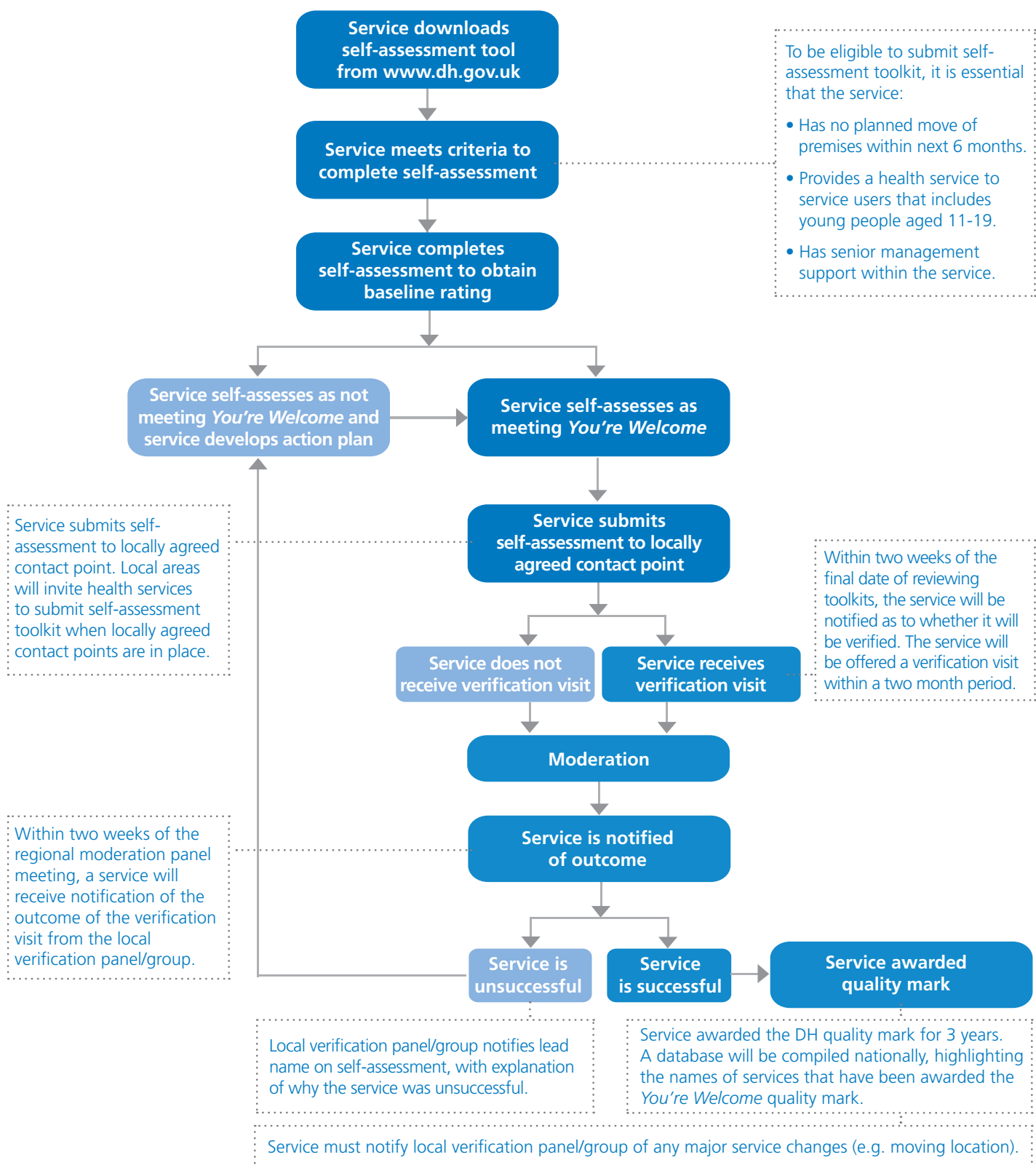
Journey for Services during 2009 - 2010

In all PCT/Children's Trust areas, the first 10 services to self-assess as 'meets *You're Welcome*' will receive an on-site verification visit. Following this, a minimum of 20% of health services that have self-assessed as 'meets *You're Welcome*' should be visited annually.



Journey for Services during 2009 - 2010

Each region is currently in the process of developing local verification panel/groups with PCT/Children's Trust areas to take forward the nationally agreed quality assurance process. Details of locally agreed contact points will be available at www.dh.gov.uk as local arrangements are finalised.



Note: Unless otherwise specified, processes and notes apply to all areas in England.

A system to challenge, in cases where You're Welcome status is declined, is being developed separately in consultation with stakeholders.